

Maritime Spatial Planning Forum

Global
Meets
Regional

marine
spatial
planning
forum



BALTIC 3rd
FORUM MSP



Assessing the impacts of MSP on society – economic and social analyses

Heini Ahtiainen

Luke Dodd, Elina Laurila, Maija Holma

HELCOM

Pan Baltic Scope, Activity 1.2.5



Co-funded by the
European Maritime and
Fisheries Fund of the
European Union



**Economic, social, cultural and ecosystem service impacts
of MSP**

Recommendations on developing a regional framework

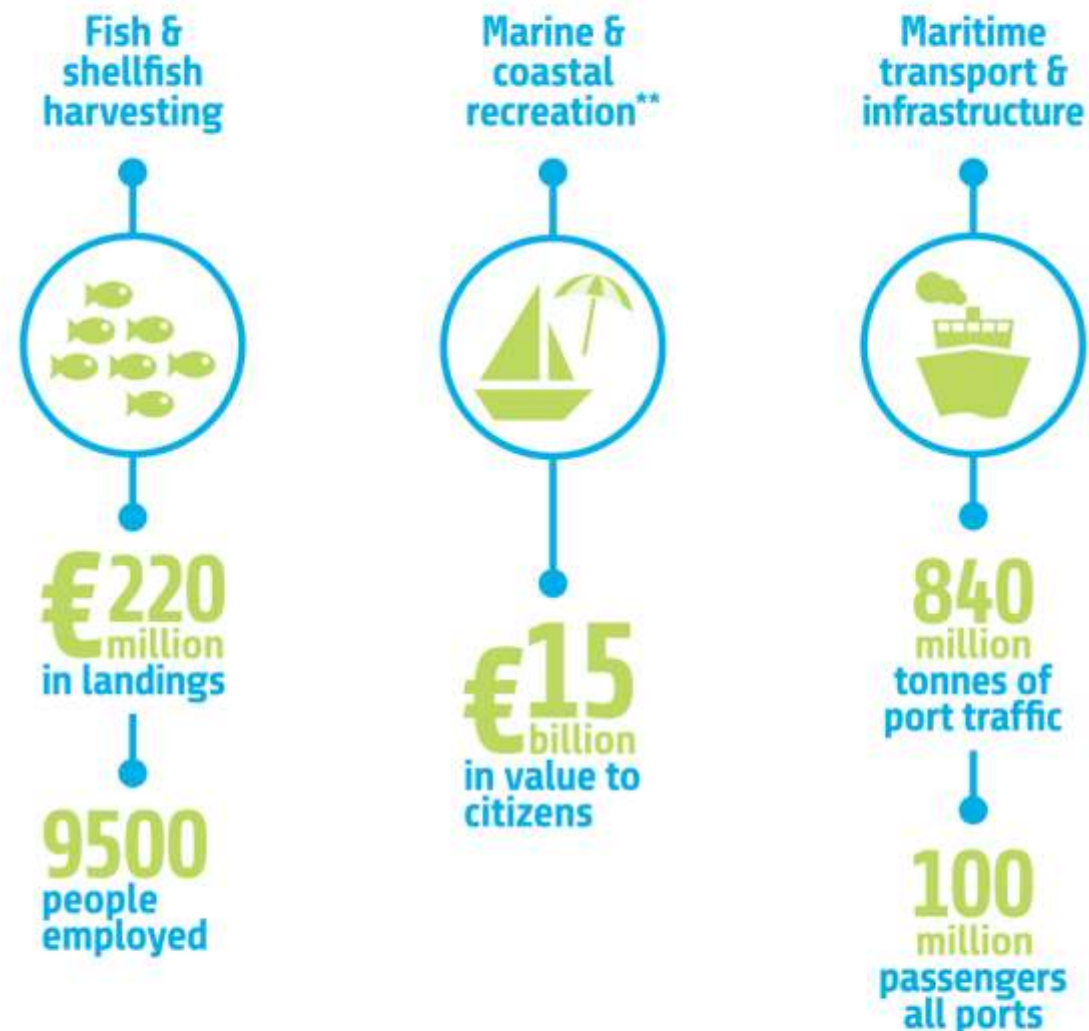
Take-home messages





Use of the marine environment affects human well-being

Benefits from the Baltic Sea*



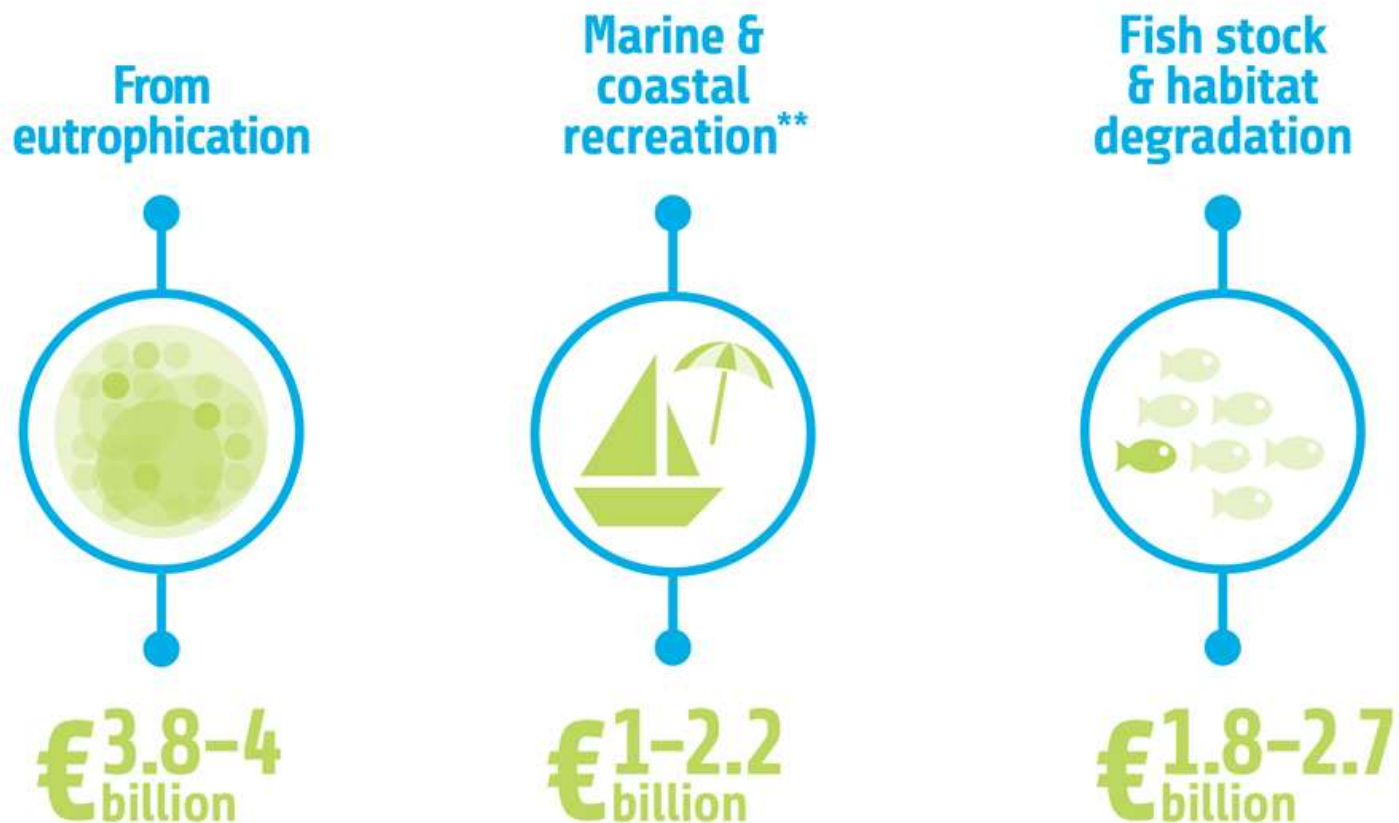
* Per year ** Travel cost method

Source: State of the Baltic Sea report, Second HELCOM Holistic Assessment



Environmental status affects human well-being

Potential revenue losses* when good environmental status is not achieved



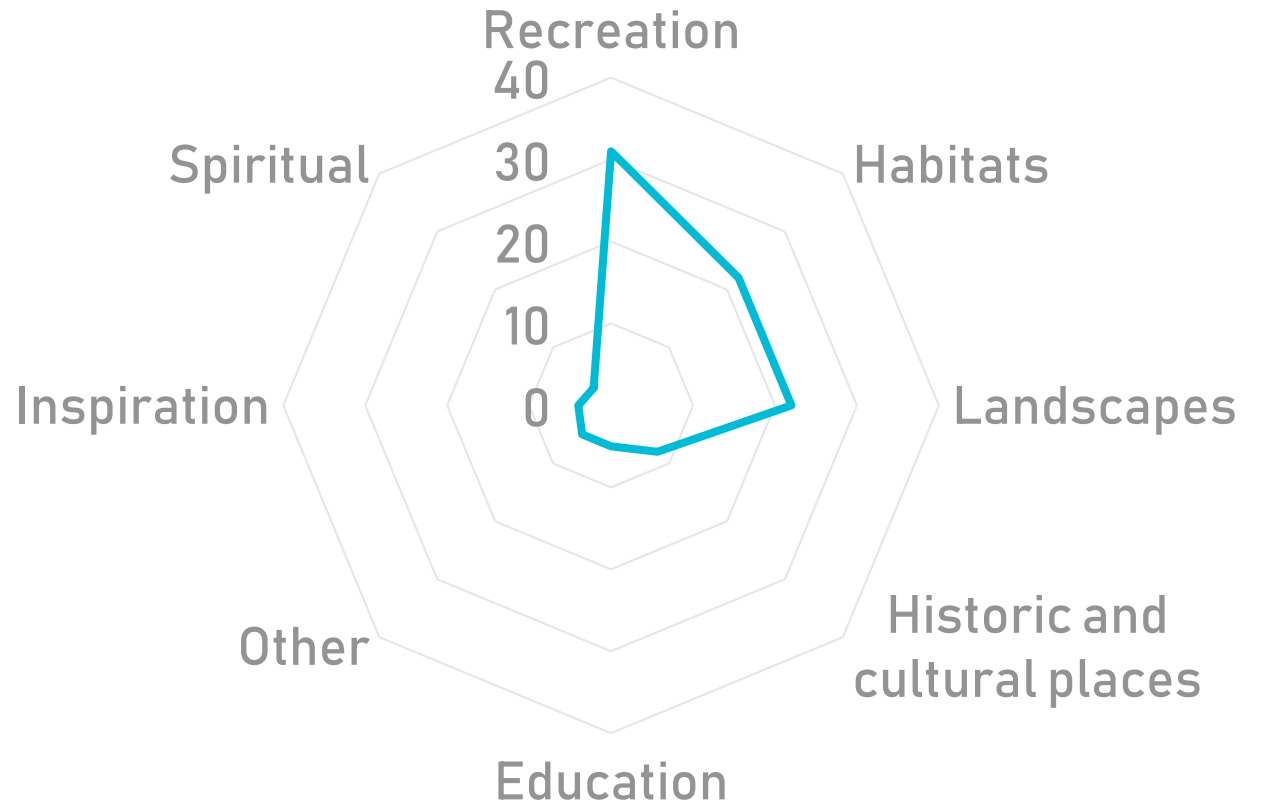
* Per year ** Travel cost method

Source: State of the Baltic Sea report, Second HELCOM Holistic Assessment



Importance of cultural ecosystem services in the Baltic Sea

Mean points (out of 100)





What did we do?

- Literature review and survey of assessing economic, social, cultural and ecosystem services impacts in MSP (lead: HELCOM)
- Recommendations on developing a regional framework for economic and social analyses in MSP (lead: HELCOM)

Presented in Workshop 4: Assessing Cumulative Impacts in MSP

- PlanWise4Blue: Integrated economic and cumulative impacts model (lead: Estonian Ministry of Finance)





Why assess economic, social, cultural and ecosystem service impacts of MSP?

- Implement the ecosystem-based approach
 - Interaction between the ecosystem and socio-economic system
 - Sustainable use of marine goods and services
- Consider economic, social and environmental aspects (EU Maritime Spatial Planning Directive)
- Capture all relevant impacts on human welfare
- Improve the comparability of impacts





Challenges

- Lack of data, resources and expertise
- Lack of comparable approaches and results
- Considerable room for interpretation on what kind of approaches and results are needed

→ Need for development work and collaboration





Economic and social analyses for MSP

Economic
contribution from
sea uses

Effect of changes in
environmental
state/ecosystem
services

Relative importance
of sea uses and
ecosystem services

Comparison of the
benefits and costs of
alternative spatial
plans





Benefits of regional work on economic and social analyses

- Enhancing regional cooperation and coherence of approaches and outputs across countries
- Aiding national and local authorities
- Improving the consideration of economic, social, cultural and ecosystem services impacts in MSP
- Example of a regional framework for economic and social analyses in Second HELCOM Holistic assessment (HOLAS II)





Recommendations on developing a regional framework for economic and social analyses in MSP (1/2)



Aim for overarching assessment of economic, social, cultural, environmental and ecosystem services impacts of MSP



Conduct integrated analysis of the ecosystem and socio-economic system to follow the ecosystem-based approach



Build on existing work and frameworks for the integrated assessment



Recommendations on developing a regional framework for economic and social analyses in MSP (2/2)



Develop approaches, data and results for spatial analyses



Develop common indicators for assessing economic, social and cultural aspects of MSP



Enable and support regional cooperation and coherent approaches and results



Developing the framework in practice (1/2)



Work in international and interdisciplinary cooperation



Engage stakeholders



Target the specific needs of planners and policy-makers



Ensure continuation and institutional memory



Developing the framework in practice (2/2)



Develop expertise and allocate resources for the analyses



Establish common terminology and understanding



Find synergies and commonalities between MSP and other policies



Ensure flexibility to allow for differences across areas



Take-home messages

1. MSP has various impacts on economic, social, cultural and ecosystem service aspects
2. These impacts should be identified and assessed to account for effects on human well-being
3. Regional frameworks and increased coherence across countries benefit also national and local authorities



Maritime Spatial Planning Forum

Global Meets Regional

marine
spatial
planning
forum



Thank you!

More information:

heini.ahtiainen(at)helcom.fi

<http://www.panbalticscope.eu/activities/advancing-the-implementation-of-the-ecosystem-based-approach-and-data-sharing/economic-and-social-analyses/>

Leaflet and report on recommendations available

Background report coming soon!



Co-funded by the European Maritime and Fisheries Fund of the European Union